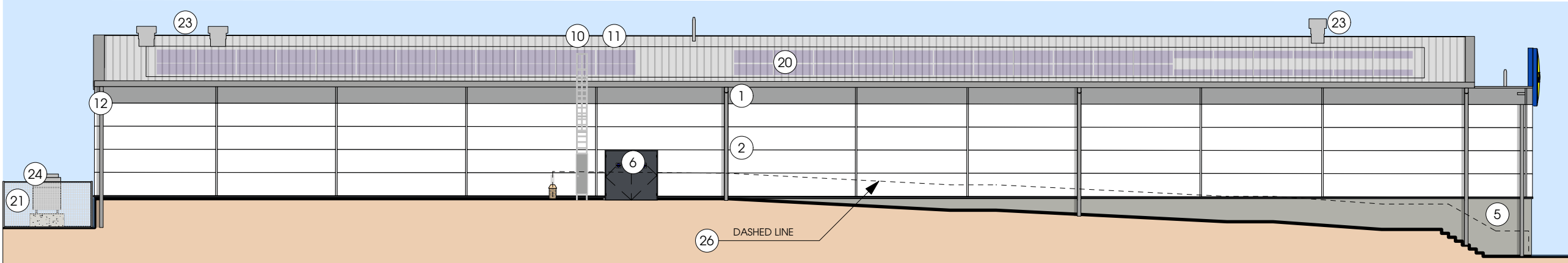
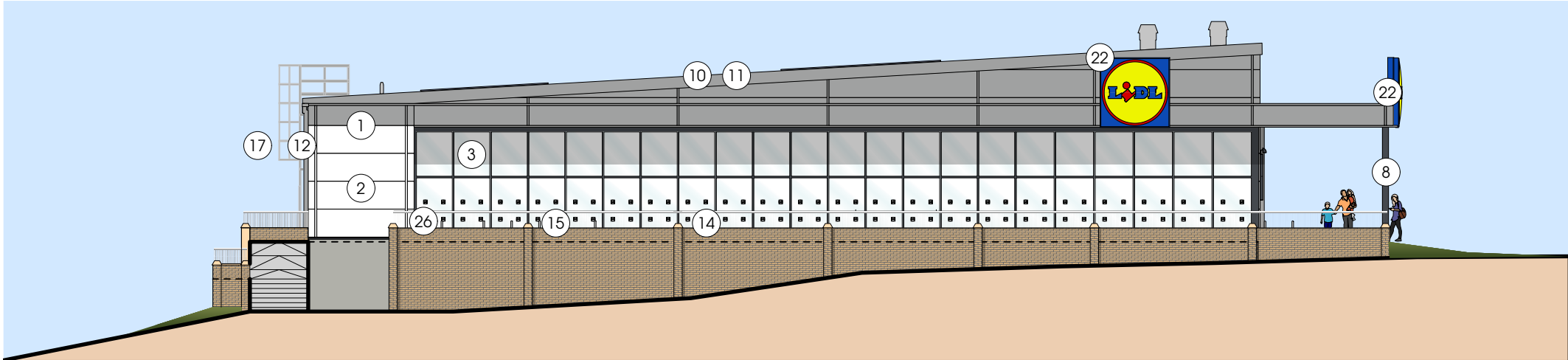


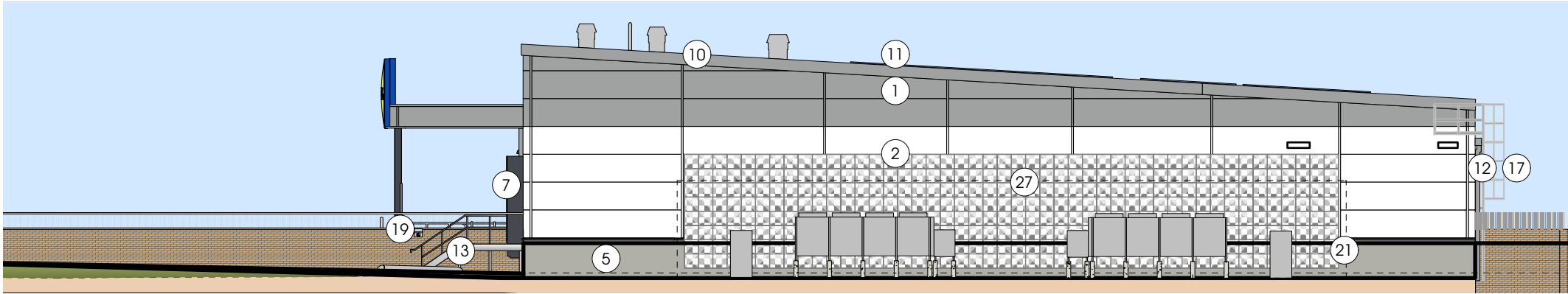
NORTH EAST ELEVATION



SOUTH WEST ELEVATION



SOUTH ELEVATION



NORTH WEST ELEVATION

MATERIALS KEY

- 1) INSULATED METAL CLADDING PANELS - COLOUR: GREY (RAL 9006)
- 2) INSULATED METAL CLADDING PANELS - COLOUR: WHITE (RAL 9010)
- 3) CURTAIN WALLING - DOUBLE GLAZED UNITS - COLOUR: GREY (RAL 7024)
- 4) ENTRANCE DOORS - DOUBLE GLAZED UNITS - COLOUR: GREY (RAL 7024)
- 5) LOW LEVEL RENDER - COLOUR: AGATE GREY (RAL 7038)
- 6) POWDER COATED STEEL DOORS - COLOUR: GREY (RAL 7024)
- 7) SECTIONAL DOOR - COLOUR: GREY (RAL 7024)
- 8)CANOPY COLUMN - COLOUR: GREY (RAL 7024)
- 9) NON OPENABLE FIXED SAFETY GLASS WINDOWS - FLASHING COLOUR: GREY (RAL 7024)
- 10) METAL COMPOSITE INSULATED ROOF PANELS - COLOUR: GREY (RAL 9006)
- 11) STEEL COPING FLASHING TO ROOF PERIMETER - COLOUR: GREY (RAL 9006) TO MATCH CLADDING.
- 12) ALUMINIUM GUTTERS AND RAIN WATER PIPES - COLOUR: GREY (RAL 9006) TO MATCH CLADDING.
- 13) GALVANISED METAL DRIVERS STEPS, STAIRCASE AND BALLUSTERS WITH HANDRAILS. ALL STEPS TO BE CONSTRUCTED IN ACCORDANCE WITH BUILDING REGS PART K.
- 14) STAINLESS STEEL TUBULAR TROLLEY GUIDES (MARINE GRADE 316) SPACES FOR WHEELCHAIR SHOPPING TROLLEYS AND TROLLEYS WITH BABY SEATS. FIXED WITH CONCRETE FOUNDATION.
- 15) STAINLESS STEEL CYCLE STANDS, 750mm HIGH, ROOT FIXED TO CONCRETE FOUNDATION.
- 16) BILLBOARD SIGNAGE INDICATIVE ONLY - FRAME COLOUR: GREY (RAL 7024)
- 17) ROOF ACCESS LADDER
- 18) CONCRETE FILLED GALVANISED STEEL HGV BOLLARD PAINTED BLACK & YELLOW AT 45DEG.
- 19) WALL-MOUNTED ASH TRAY SHOWN AS INDICATIVE ONLY, TO BE LOCATED CLOSE TO DRIVER'S STAIR
- 20) PV PANELS WITH FALL PROTECTION SYSTEM (INDICATIVE ONLY)
- 21) 3.5m JAKOUSTIC® ABSORPTIVE ACOUSTIC FENCING OR SIMILAR APPROVED ACOUSTIC CLOSED BOARD TIMBER FENCE WITH ABSORBENT INNER LINING (FACING PLANT EQUIPMENT)
- 22) LIDL SIGN. SUPPORTING FRAME COLOUR: BLUE (RAL 5010).
- 23) ROOF MOUNTED M&E OUTLETS (INDICATIVE ONLY)
- 24) EXTERNAL PLANT EQUIPMENT (INDICATIVE ONLY). EQUIPMENT TO BE SAT ON 5No. 600mm HIGH CONCRETE PIERS FOR REFRIGERATION DRY-COOLER WHERE REQUIRED. IN LINE WITH LD(15) ME-08
- 25) PROPOSED SUBSTATION - SUBJECT TO SPECIALIST DESIGN
- 26) PROPOSED 0.5m ABOVE GROUND LEVEL BRICK FACED BUFF RETAINING WALL WITH BUFF CAPPING & 0.6m HANDRAIL IN ACCORDANCE WITH APPROVED DOCUMENTS M&K.
- 27) CLADSOUND BLOK (OR SIMILAR APPROVED) CLADDING PANELS UP TO 4.0m

