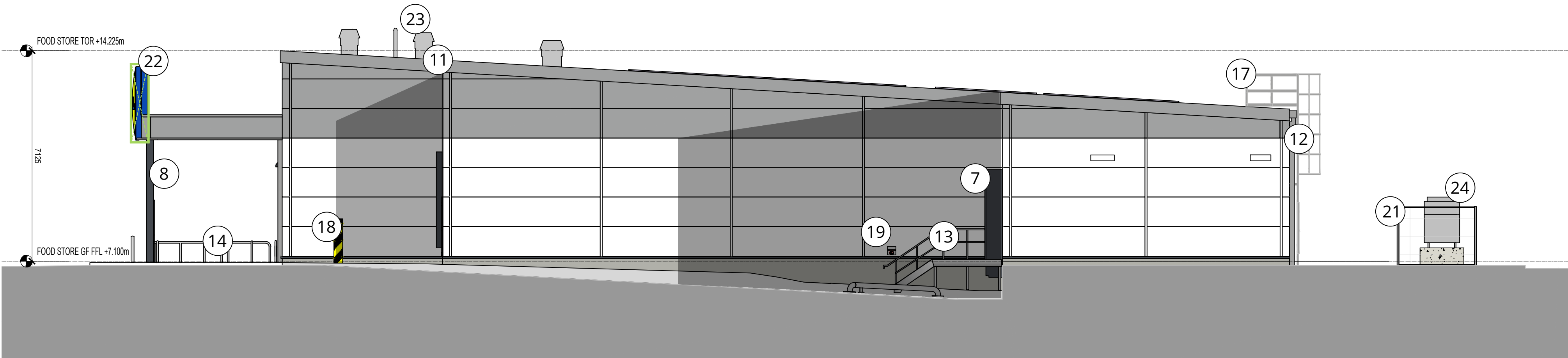
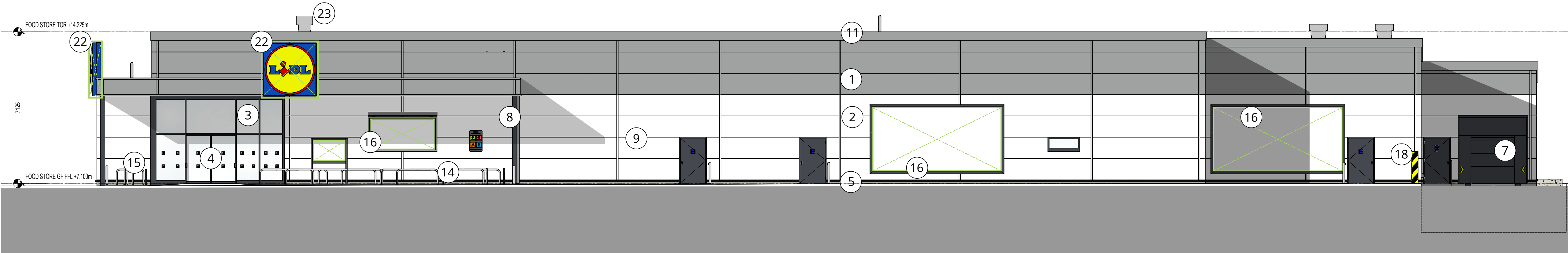


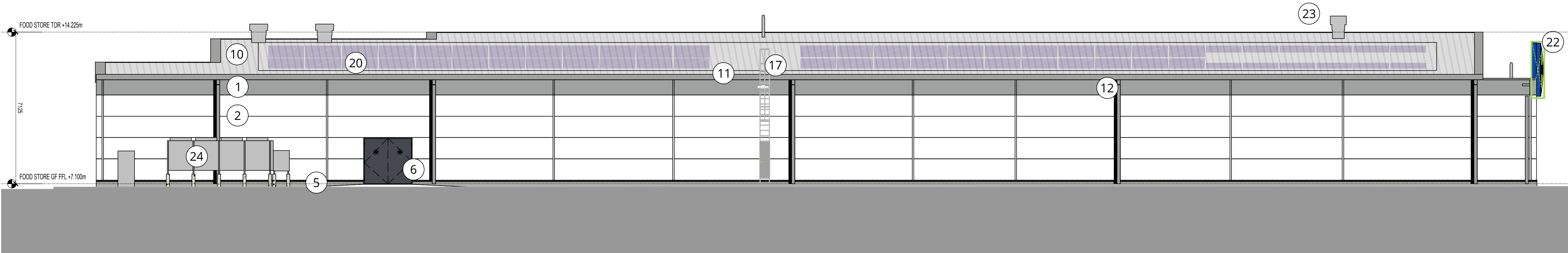
AA - SOUTH ELEVATION



BB - WEST ELEVATION

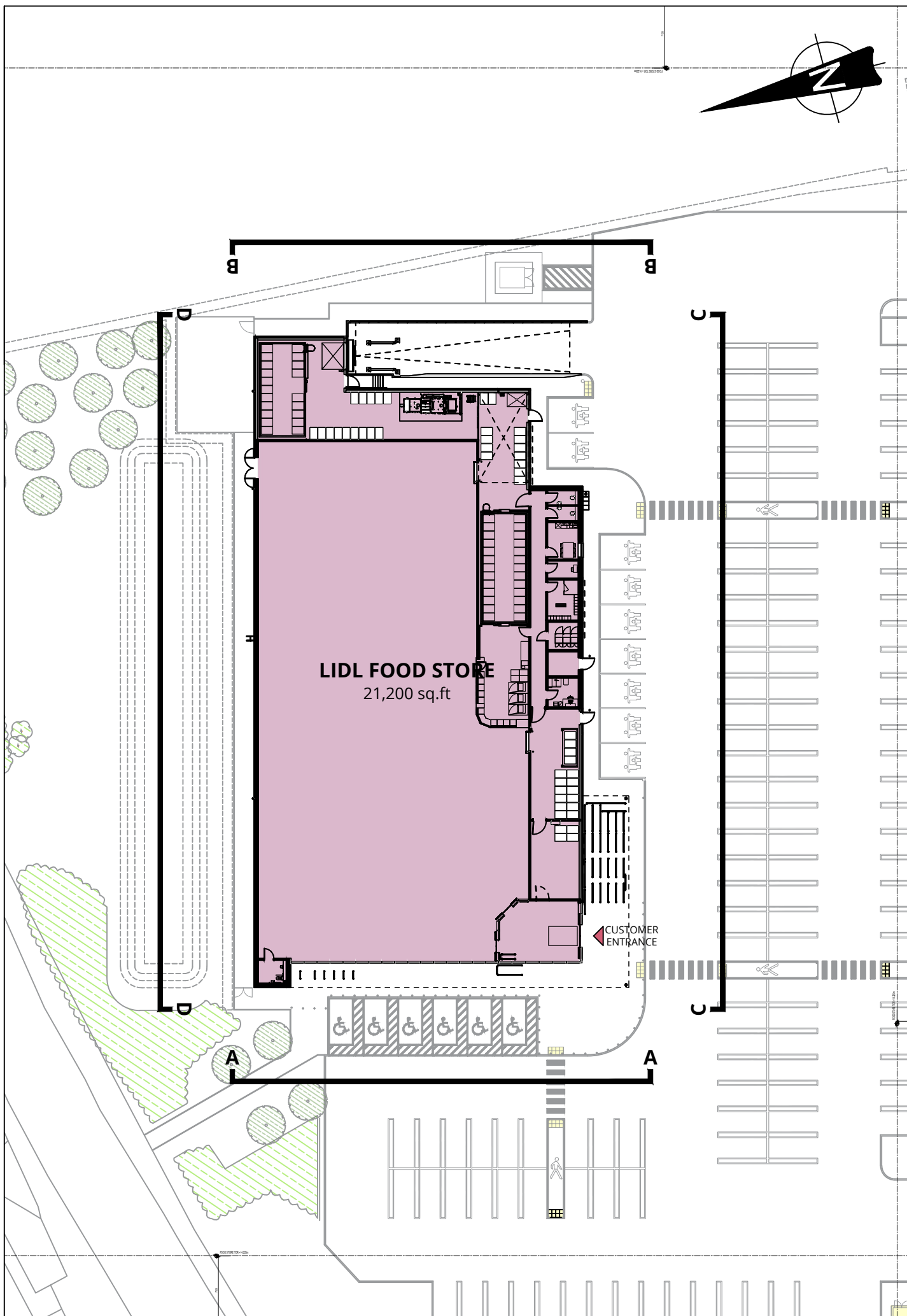


CC - EAST ELEVATION



DD - NORTH ELEVATION

SCALE 1 : 100  
SCALE 1 : 1



KEY PLAN  
NTS

Copyright of this drawing is the property of Urban Edge Architecture Limited. It must not be reproduced or amended nor used in the execution of any works whether in conjunction with the proposed works for which it is prepared or otherwise without the express consent in writing of Urban Edge Architecture Limited.

UrbanEdge Architecture Limited  
One Scotgate Mews, Scotgate,  
Stamford, Lincolnshire, PE9 2FX.

Tel. +44 (0)1780 755665  
Fax. +44 (0)1780 755360

THIS DRAWING IS FOR PLANNING ONLY AND IS NOT TO BE USED FOR  
TENDER OR CONSTRUCTION

**DRAWING TO BE READ IN COLOUR**

- MATERIALS KEY**
- INSULATED METAL CLADDING PANELS  
- COLOUR: GREY (RAL 9006)
  - INSULATED METAL CLADDING PANELS  
- COLOUR: WHITE (RAL 9010)
  - CURTAIN WALLING - DOUBLE GLAZED UNITS  
- COLOUR: GREY (RAL 7024)
  - ENTRANCE DOORS - DOUBLE GLAZED UNITS  
- COLOUR: GREY (RAL 7024)
  - LOW LEVEL RENDER  
- COLOUR: AGATE GREY (RAL 7038)
  - POWDER COATED STEEL DOORS  
- COLOUR: GREY (RAL 7024)
  - SECTIONAL DOOR  
- COLOUR: GREY (RAL 7024)
  - CANOPY COLUMN  
- COLOUR: GREY (RAL 7024)
  - NON-OPENABLE FIXED SAFETY GLASS WINDOWS  
- FLASHING COLOUR: GREY (RAL 7024)
  - METAL COMPOSITE INSULATED ROOF PANELS  
- COLOUR: GREY (RAL 9006)
  - STEEL COPING FLASHING TO ROOF PERIMETER  
- COLOUR: GREY (RAL 9006) TO MATCH CLADDING.
  - ALUMINIUM GUTTERS AND RAIN WATER PIPES  
- COLOUR: GREY (RAL 9006) TO MATCH CLADDING.
  - GALVANISED METAL DRIVERS STEPS, STAIRCASE AND BALUSTERS WITH HANDRAILS. ALL STEPS TO BE CONSTRUCTED IN ACCORDANCE WITH BUILDING REGS PART K.
  - STAINLESS STEEL CYCLE STANDS, 750mm HIGH, ROOF FIXED TO CONCRETE FOUNDATION.
  - STAINLESS STEEL TROLLEY GUIDES (MARINE GRADE 316) SPACES FOR WHEELCHAIR SHOPPING TROLLEYS AND TROLLEYS WITH BABY SEATS. FIXED WITH CONCRETE FOUNDATION.
  - BILLBOARD SIGNAGE INDICATIVE ONLY - FRAME COLOUR: GREY (RAL 7024)
  - ROOF ACCESS LADDER
  - CONCRETE FILLED GALVANISED STEEL HGV BOLLARD PAINTED BLACK & YELLOW AT 45DEG.
  - WALL-MOUNTED ASH TRAY SHOWN AS INDICATIVE ONLY, TO BE LOCATED CLOSE TO DRIVER'S STAIR
  - PV PANELS WITH FALL PROTECTION SYSTEM (INDICATIVE ONLY)
  - 2m PALADIN FENCE - COLOUR: GREY (RAL 7037)
  - TENANT SIGN. - SUPPORTING FRAME COLOUR: BLUE (RAL 5010).
  - ROOF MOUNTED M&E OUTLETS (INDICATIVE ONLY)
  - EXTERNAL PLANT EQUIPMENT (INDICATIVE ONLY). EQUIPMENT TO BE SAT ON 500. 600mm HIGH CONCRETE PIERS FOR REFRIGERATION DRY-COOLER WHERE REQUIRED. IN LINE WITH LD(15) ME-08

INDICATIVE TENANT SIGNAGE ZONES.  
- TENANTS ARE REQUIRED TO SUBMIT THEIR OWN ADVERTISEMENT CONSENT APPLICATIONS FOR SIGNAGE

P00 FOR PLANNING AS 13/01/26  
Rev No Description Drawn By Date

**URBANEDGE**  
architecture / landscape / masterplanning

Client  
**BRITISH LAND COMPANY PLC**

Project  
**NORTHERN QUARTER  
BROUGHTON SHOPPING PARK  
CHESTER**

Drawing  
**FOOD STORE  
ELEVATIONS  
AS PROPOSED**

Issue Description

**FOR PLANNING**

Ref No	Issue	Date	Status	Revision
2960	1:100@A1	JAN 26	AS	P00

Project Organisation UrbanEdge Limited Type: Masterplan  
**2960-URB-FS-ZZ-DR-A-208250**