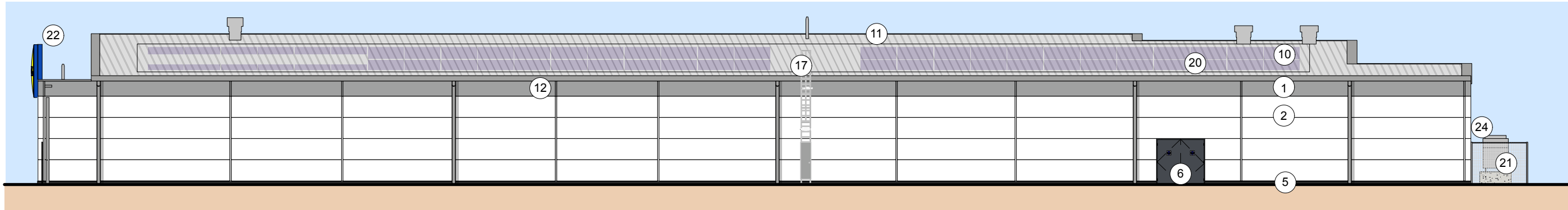
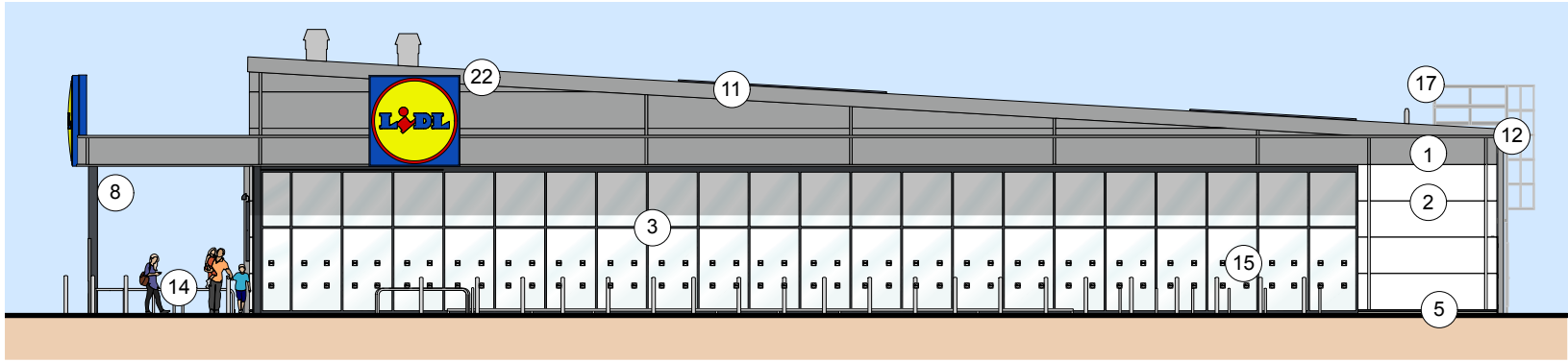


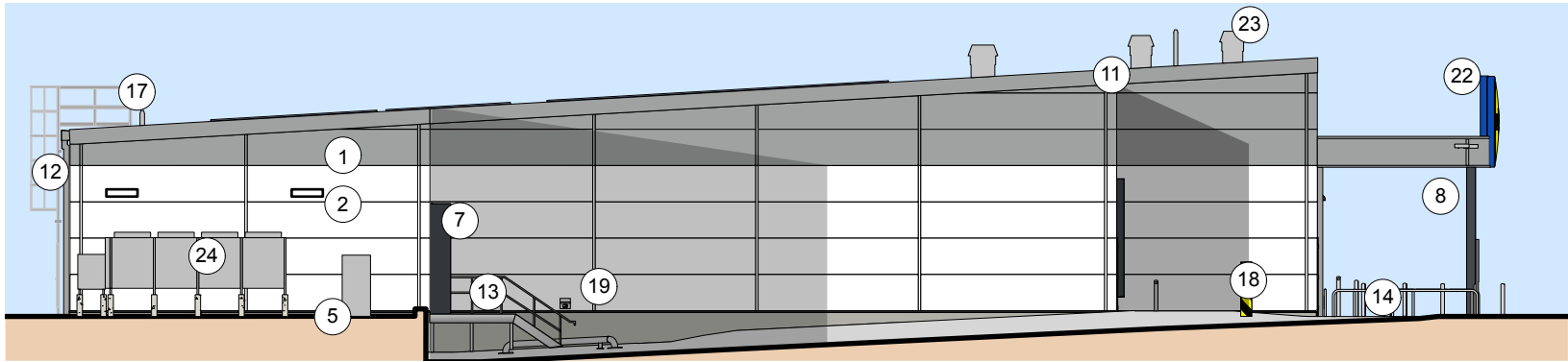
FRONT ELEVATION(EAST ELEVATION)



REAR ELEVATION (WEST ELEVATION)



GLAZED GABLE ELEVATION (NORTH ELEVATION)



GABLE ELEVATION (SOUTH ELEVATION)

THIS DRAWING IS COPYRIGHT AND REMAINS THE PROPERTY OF HTC ARCHITECTS. IT MUST NOT BE REPRODUCED, USED, DISCLOSED OR TRANSMITTED TO THIRD PARTIES IN ANY FORM, IN WHOLE OR IN PART, WITHOUT PRIOR WRITTEN PERMISSION.

ALL DIMENSIONS SHOULD BE CHECKED ON SITE BEFORE WORK COMMENCES

DESIGN SUBJECT TO FURTHER SURVEYS AND CONSULTANT INFORMATION

MATERIALS KEY

- 1 INSULATED METAL CLADDING PANELS - COLOUR: GREY (RAL 9006)
- 2 INSULATED METAL CLADDING PANELS - COLOUR: WHITE (RAL 9010)
- 3 CURTAIN WALLING - DOUBLE GLAZED UNITS - COLOUR: GREY (RAL 7024)
- 4 ENTRANCE DOORS - DOUBLE GLAZED UNITS - COLOUR: GREY (RAL 7024)
- 5 LOW LEVEL RENDER - COLOUR: GREY (RAL 7038)
- 6 POWDER COATED STEEL DOORS - COLOUR: GREY (RAL 7024)
- 7 SECTIONAL DOOR - COLOUR: GREY (RAL 7024)
- 8 CANOPY COLUMN - COLOUR: GREY (RAL 7024)
- 9 NON OPENABLE FIXED SAFETY GLASS WINDOWS - FLASHING COLOUR: GREY (RAL 7024)
- 10 METAL COMPOSITE INSULATED ROOF PANELS - COLOUR: GREY (RAL 9006)
- 11 STEEL COPING FLASHING TO ROOF PERIMETER - COLOUR: GREY (RAL 9006) TO MATCH CLADDING.
- 12 ALUMINIUM GUTTERS AND RAIN WATER PIPES - COLOUR: GREY (RAL 9006) TO MATCH CLADDING.
- 13 GALVANISED METAL DRIVERS STEPS, STAIRCASE AND BALLUSTERS WITH HANDRAILS. ALL STEPS TO BE CONSTRUCTED IN ACCORDANCE WITH BUILDING REGS PART K.
- 14 STAINLESS STEEL TUBULAR TROLLEY GUIDES (MARINE GRADE 316) SPACES FOR WHEELCHAIR SHOPPING TROLLEYS AND TROLLEYS WITH BABY SEATS. FIXED WITH CONCRETE FOUNDATION.
- 15 STAINLESS STEEL CYCLE STANDS, 750mm HIGH, ROOT FIXED TO CONCRETE FOUNDATION.
- 16 BILLBOARD SIGNAGE INDICATIVE ONLY - FRAME COLOUR: GREY (RAL 7024)
- 17 ROOF ACCESS LADDER
- 18 CONCRETE FILLED GALVANISED STEEL HGV BOLLARD PAINTED BLACK & YELLOW AT 45DEG.
- 19 WALL-MOUNTED ASH TRAY SHOWN AS INDICATIVE ONLY, TO BE LOCATED CLOSE TO DRIVER'S STAIR
- 20 PV PANELS WITH FALL PROTECTION SYSTEM (INDICATIVE ONLY)
- 21 2m PALADIN FENCE - COLOUR: GREY (RAL 3037)
- 22 LIDL SIGN. SUPPORTING FRAME COLOUR: BLUE (RAL 5010).
- 23 ROOF MOUNTED M&E OUTLETS (INDICATIVE ONLY)
- 24 EXTERNAL PLANT EQUIPMENT (INDICATIVE ONLY) EQUIPMENT TO BE SAT ON 5No. 600mm HIGH CONCRETE PIERS FOR REFRIGERATION DRY-COOLER WHERE REQUIRED. IN LINE WITH LD(15) ME-08

